

Model: Saddle Finisher-G1

Ref. No. : FF-T01-W-000170-01

Date : June 28, 2002

© Canon (UK) Limited

Location: Inside the Machine

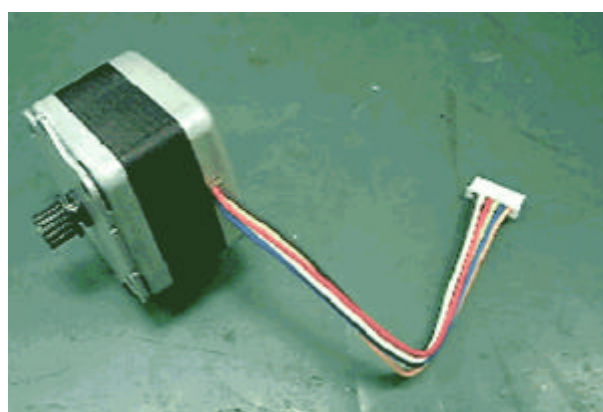
Subject: Using a Different Stepping Motor (M2)

Reason: To go along with the efforts made to reduce (buzzing) noise in other products, a stepping motor (M2) equipped with an anti-vibration member will be used.

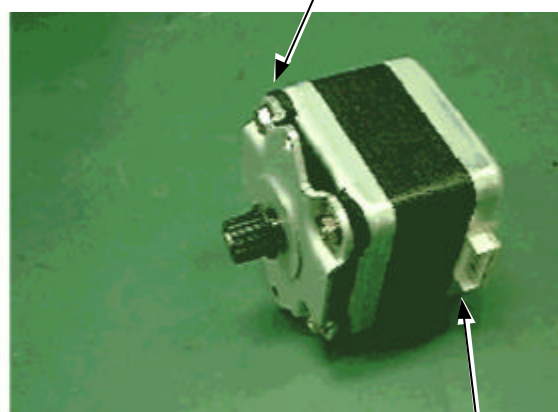
Detail:

To accommodate the use of a stepping motor (M2) equipped with an anti-vibration member, the following changes have been made:

1. The shape of the positioning hole in the bracket has been relocated to permit the anti-vibration member.
2. The stepping paddle motor cable has been made longer to make up for the absence of a lead wire in the new motor.



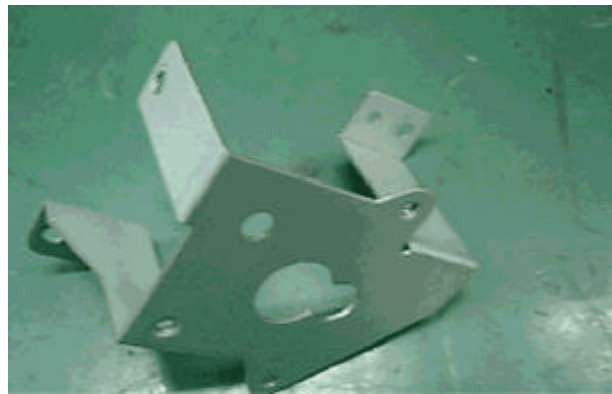
Stepping motor



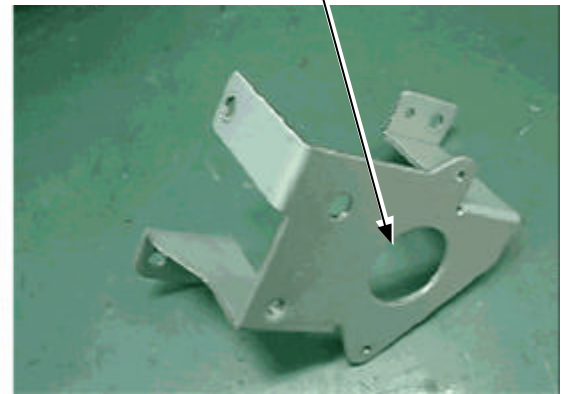
Stepping motor equipped with an anti-vibration member

Connector

Figure 1



Bracket (before change)



Bracket (after change)

Figure 2



Stepping paddle motor cable (before change)

Figure 3



Cable for M2 motor connection

Stepping paddle motor cable (after change)

Figure 4

Points to Note About Service Work:

When replacing the existing motor with an M2 motor equipped with an anti-vibration member, be sure to replace the following 3 items at the same time: stepping motor, stepping paddle motor cable, bracket.

Service Parts:

No.	Description		Part number	Q'ty	Stock	Inter-change-ability	P.C.
							Stock date
1	Old	MOTOR, STEPPING	4K1-1065-000	1→0	*C	↓ ↑	Q11
	New	MOTOR, STEPPING	4K1-1080-000	0→1	D	↓ ↑	
2	Old	CABLE, STEPPING PADDLE MOTOR	4H1-6463-000	1→0	C	↓ ↑	Q11
	New	CABLE, STEPPING PADDLE MOTOR	4H1-6602-000	0→1	D	↓ ↑	
3	Old					↓ ↑	Q11
	New	BRACKET	4B1-0390-000	0→1	D	↓ ↑	

* Interchangeable by replacing all three parts at the same time.

Affected Machines:

F25-7701 (6681A001AA): XEH02162 and later